



For any project or construction ...

One company, numerous solutions

Presenting HONEST NATURA, a wooden series of 50+ laminates design to make your abode and space look ravishing and aesthetically beautiful.

Wooden objects have been used for centuries, from furniture to tools to buildings. Wood is a renewable resource that is strong and durable, making it a popular choice for a variety of applications.

Though these laminates are often associated with a more contemporary look, they can also be used in more traditional settings when combined with wooden accents.



HIGH-FLEXIBILITY



HEAT RESISTANT



ABRASION RESISTANT



FIRE RETARDANT



STAIN RESISTANT

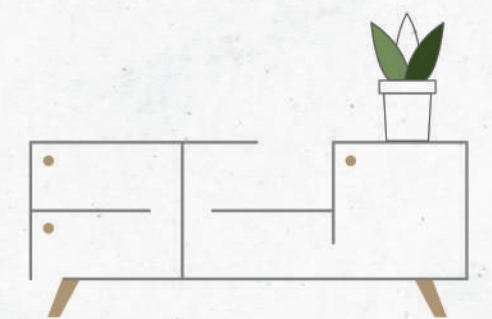


SCRATCH RESISTANT



100%
PURE
PHENOLIC
LAMINATE

ELEGANCE
TEXTURES





shimmer & elegance

Nurture the most prominent designs in your leeway and transform it into a masterpiece of urban art covered with enthralling articles.



Natura.
crafted with excellence

FLAXEN *collection*

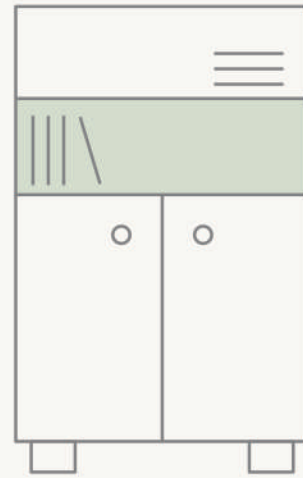
HONEST[®]
LAMINATES COLLECTION



HG - 8001



HG - 8002



live your

adventure

ORNATE *collection*



HG - 8003



favour spirit of grandeur

Rustic can be flamboyant too with textures that splash a dash of upbeat patterns, it's a sure shot mesmerizing formula.



Natura. 
crafted with excellence

LUXE *collection*

HONEST[®]
LAMINATES COLLECTION



HG - 8004

HONEST[®]
LAMINATES COLLECTION

TEXTURE

LAMINATES
COLLECTION



SEAMLESS LUXURY
FOR THE ULTIMATE
BEAUTY



imagination



OAK - 8011



OAK - 8012



OAK - 8013



OAK - 8014

rich & refined

The smart look of these brilliant designs create a feel of a modish terrain that takes you to another level altogether.



OAK - 8015



OAK - 8016



OAK - 8017



OAK - 8018



ESPRESSO *collection*

HONEST[®]
LAMINATES COLLECTION

calming of earth

The benefits of this vast range of vigor has its own charm and produces effective results of exquisiteness.



Natura. 
crafted with excellence



OAK - 8019



OAK - 8020

charismatic

style art



HICKORY *collection*



OAK - 8021

sense of balance

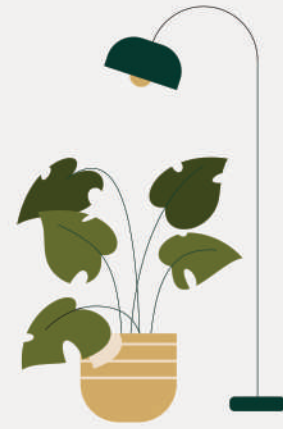


OAK - 8022

BOUCLE *collection*



OAK - 8023



↑ attractive



OAK - 8024



OAK - 8025



beautify the space

Give way to innovative norms of revolutionary designs that create a dazzle of its own when stunning textures create striking design statements.



Natura.
crafted with excellence

PIETRA *collection*

HONEST[®]
LAMINATES COLLECTION



HG - 8041

incredible beautify




HG - 8042



HG - 8043



HG - 8044

impressively



HG - 8045

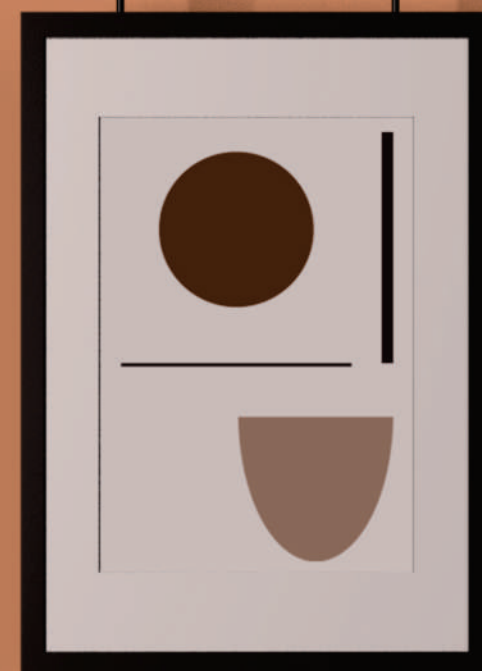
HONEST[®]
LAMINATES COLLECTION

SUEDE FINISH

LAMINATES
COLLECTION

Natura. 
crafted with excellence

BRINGING
FOR
THE
LUXURY
IN
EVERY
AS PAC
OF
LIFE





SF - 8051



SF - 8052

metropolitan



SF - 8053



SF - 8054



SF - 8055

traditions

meet urbanity



SF - 8056

SIBERIAN *collection*



SF - 8057

designs

The faint grains and whirly details with a slightly chalked look typify this oak décor lending it a lifelike character of real wood with a strong three dimensional touch.





the sizzle of suave

Nurture the most prominent designs in your leeway and transform it into a masterpiece of urban art covered with enthralling articles.



Natura.
crafted with excellence

LARICE *collection*

HONEST[®]
LAMINATES COLLECTION



SF - 8058



SF - 8059

spectacular



SF - 8060



SF - 8061

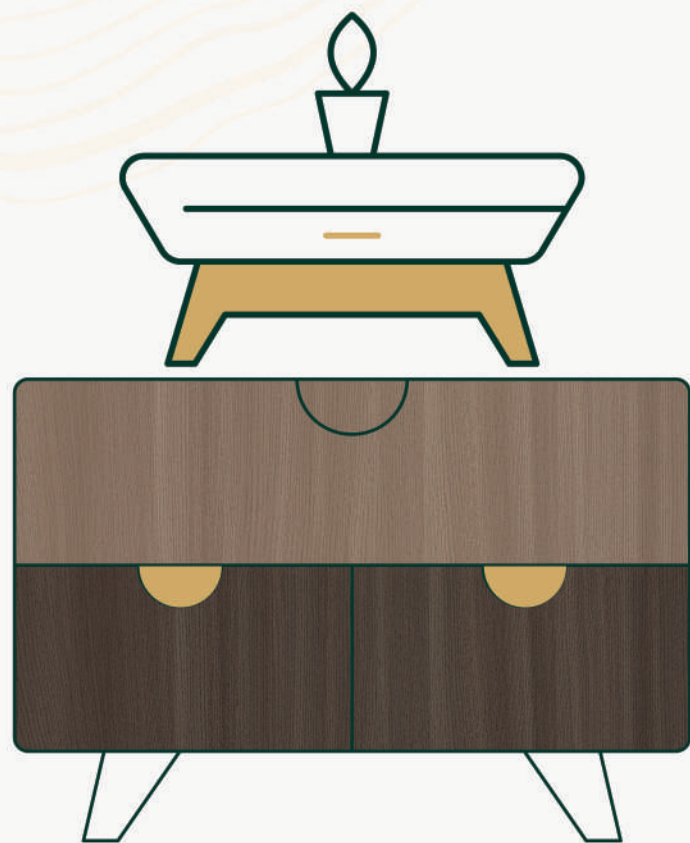


SF - 8062



art that speaks

The dainty verve of each surface livens up to its own magnificent style that's charming and captivating in appeal.



Natura. 
crafted with excellence

WELLINGTON *collection*

HONEST[®]
LAMINATES COLLECTION



SF - 8063



SF - 8064




SF - 8065



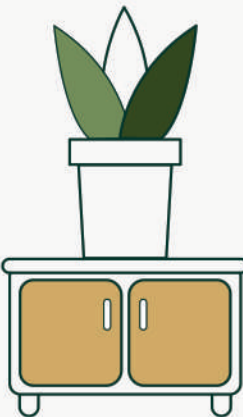
SF - 8066

a sense of
balance






incredible




SF - 8067



SF - 8068



SF - 8069

contrast come

together



SF - 8070

artistic surfaces



SF - 8071



SF - 8072



SF - 8073



SF - 8074

mesmerizing



SF - 8075

FIGURA *collection*



SF - 8076



SF - 8077



SF - 8078

CARE AND MAINTENANCE

Here are some maintenance tips for your laminate surfaces to keep them clean and strong for years together:

- Dust the surfaces regularly with a clean duster and wipe them with a mildly wet cloth. Make sure that you don't add more water to them for cleaning. Also, dry the surface with a napkin soon after wiping it with a wet cloth.

- Avoid using Steel wires, abrasive detergents, acids, etc., for cleaning the laminate surfaces as they might damage the sheets.

- Don't allow excess sunlight to fall on your laminates as there are chances of them fading with time due to the UV radiations.

Do not Polish or Wax as it can lead to permanent damages to designs.

- At the time of loading decorative laminate sheets, extreme care has to be taken so that accidental breakage, dents and cracks needs to be avoided and for that laminates should be lifted and not to slide.

Ensure the laminates is facing towards your body to lower the possibilities of damage. Don't forget to roll the laminates vertically.

- Cutting laminates for furniture requires a perfect combination between the speed of cutting tool, the thickness of laminates and the kind of cutting tool one uses. To get a perfect cut use of elements such as Rigid Sacrificial Panels, Diamond Cutting Tools, Tungsten Carbide.



crafted
excellence

	PROPERTIES	SPECIFIED VALUES AS PER IS:2046-1995	HONEST CONFIRMS
	Thickness	0.92mm (± 10%)	✓
	Resistance to surface wear	350 (revolution)	✓
	Resistance to immersion in boiling water		
	- Mass increase (%)	10.0 Max.	✓
	- Thickness increase (%)	11.8 Max.	✓
	Resistance to dry heat 180° C	Not worse than 4	✓
	Dimensional stability at deviated temperature		
	- Longitudinal (%)	0.5 Max.	✓
	- Transverse (%)	0.9 Max.	✓
	- Dimensional stability at 20° C		
	- Longitudinal (%)	0.375 Max.	✓
	- Transverse (%)	0.60 Max.	✓
	Resistance to impact by small diameter ball	20N Min.	✓
	Resistance to cracking	Not worse than 4	✓
	Resistance to scratching	2N Min.	✓
	Resistance to staining	Not worse than 5	✓
	Resistance to colour change (wool standards)		
	- In Xenon arc light	Not worse than 6	✓
	- In enclosed Carbon arc light	Not worse than 5	✓
	Resistance to cigarette burns	Not worse than 3	✓
	Resistance to steam	Not worse than 4	✓
	Appearance	Should be free from foreign particles	✓

All testes may not valid for embossed & metallic laminates.

Grades : General and fire retardant (FR)
Types : Standard, post forming, compact, cabinet liners, backer
Size : 2440 mm x 1220 mm (8"x4")
Thickness : 0.92 mm (± 10%)

HONEST Highlight :

- Design from genuine imported base paper
- Manufactured using best quality kraft paper.
- Use of best chemical raw materials for better flexibility & durability.

Care & maintenance :

Cleaning should be carried out with a soft moist cloth and warm soap solution. Do not use detergents containing abrasive particle or excess soda.

Disclaimer : Customers are advised to reconfirm selected laminate when placing orders as our liability does not include claims arising from sample chip pasting error. Sample presented are indicative pf colour, pattern and surface finish but not of actual thicknesses. All metallic patterns series recommended for vertical application only.

Limited Warranty : HONEST warrants that its products are reasonable free from manufacturing defects. The products when properly used, will comply with normal deviation, to related manufacturing specifications. This warranty shall be limited only to the original buyer for a period of care.. improper use and / or any alteration. It is recommended that the products must be inspected prior to installation and our liability will be limited to the extent of the cost of the products only. HONEST is used for various applications, without the possibility of control over the manufacturing of the finished products. The Company does not assume obligations or liabilities arising from the furnishing, sale, installation or repair, use or subsequent sale of any product, to any person or entity.